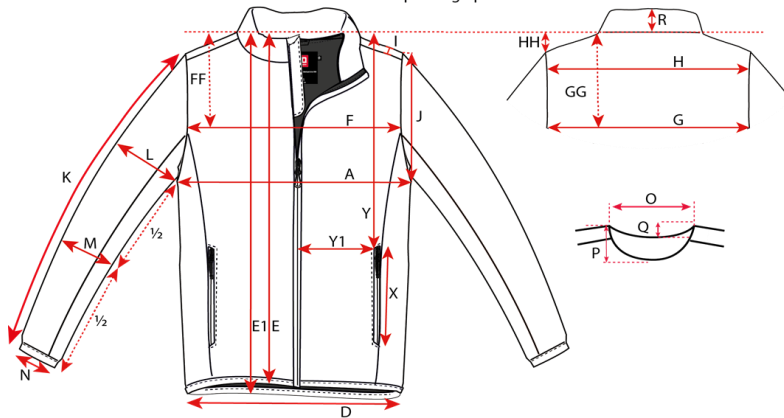


## MEN

Size		S	M	L	XL	2XL	3XL
A	½ chest at flat fabric	53	56	59	62	65	68
D	½ bottom relaxed	45	48	51	54	57	60
	½ bottom stretched	52	55	58	61	64	67
E	Length from hps, front	66	68	70	72	74	76
E1	Length from hps, back	68	70	72	74	76	78
H	Shoulder to shoulder	45	46,5	48	49,5	51	52,5
J	Armhole depth	23	23,75	24,5	25,25	26	26,75
K	Sleeve length	69	70	71	72	73	74
L	½ upper arm width	22	23	24	25	26	27
N	½ sleeve hem relaxed	9	9,5	10	10,5	11	11,5
	½ sleeve hem stretched	14,5	15	15,5	16	16,5	17

These are fabric measurements in centimeters (cm), hps = high point shoulder.

How to measure - not for design  
hps = high point shoulder



## WOMEN

Size		S	M	L	XL	2XL	3XL
A	½ chest at flat fabric	49	52	55	58	61	64
B	½ waist	45	48	51	54	57	60
D	½ bottom relaxed	45	48	51	54	57	60
	½ bottom stretched	52	55	58	61	64	67
E	Length from hps, front	62	64	66	68	70	72
E1	Length from hps, back	62	64	66	68	70	72
H	Shoulder to shoulder	39,5	41	42,5	44	45,5	47
J	Armhole	22,5	23	23,75	24,5	25,25	26
K	Sleeve length	64	65	66	67	68	69
L	½ upper arm width	20	21	22	23	24	25
N	½ sleeve hem relaxed	9	9,5	10	10,5	11	11,5
	½ sleeve hem relaxed	14,5	15	15,5	16	16,5	17

There are fabric measurements in centimeters (cm), hps = high point shoulder.

How to measure - not for design  
hps = high point shoulder

